

Berger Realty

Since 1928



Berger Realty, Inc.
3160 Asbury Avenue
Ocean City, NJ 08226
1-877-237-4371 / 609-399-0076
info@bergerrealty.com



6206 Main Ave
Egg Harbor Township, NJ 08234

Asking \$499,000.00



SJSRMLS

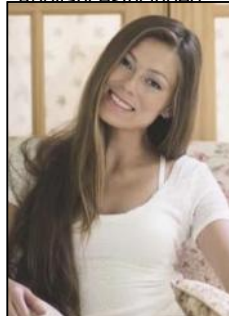
COMMENTS

*****NEW CONSTRUCTION TO BE BUILT*****TAKE YOUR CHOICE OF 3 BEAUTIFUL LOTS IN POSSIBLE 3 LOT SUBDIVISION. EXACTLY WHAT BUYERS WANT-RANCH 1 LEVEL LIVING HOMES W/ OPEN SPACIOUS FLOORPLAN! BRAND NEW CONSTRUCTION-SPRAWLING 3 BR 2 BA MODEL-3 LOTS TO CHOOSE FROM-LARGE MASTER SUITE W/ PRIVACY.LARGE .566 ACRE LOTS 100 X 211 SITS FAR OFF ROAD.WALK UP ATTIC, OPEN LAYOUT W/ LARGE BEDRM SIZES. TIME TO PICK OUT COLORS/SEVERAL MODELS TO CHOOSE FROM- CALL L/A FOR DETAILS. GARAGE AND BASEMENT OPTIONS. NUMEROUS MODELS/FLOORPLANS TO SELECT FROM.TIME TO BUY-RATES LOW-BRAND NEW!BASE PRICE OF HOME ONLY LISTED PLUS UPGRADES,AMENITIES AND LOT PRICE.

PROPERTY DETAILS

Exterior	OutsideFeatures	ParkingGarage	OtherRooms
Vinyl	Porch	Two Car	Dining Room
			Eat In Kitchen
			Laundry/Utility Room
			Primary BR on 1st floor
			Storage Attic

AppliancesIncluded



Heating
Forced Air
Cooling
Central
Gas
As listed by Margarita Kobilianets

Berger Realty Inc
3160 Asbury Avenue, Ocean City
Call: 609-399-0076
Email to: mak@bergerrealty.com

