

Berger Realty

Since 1928

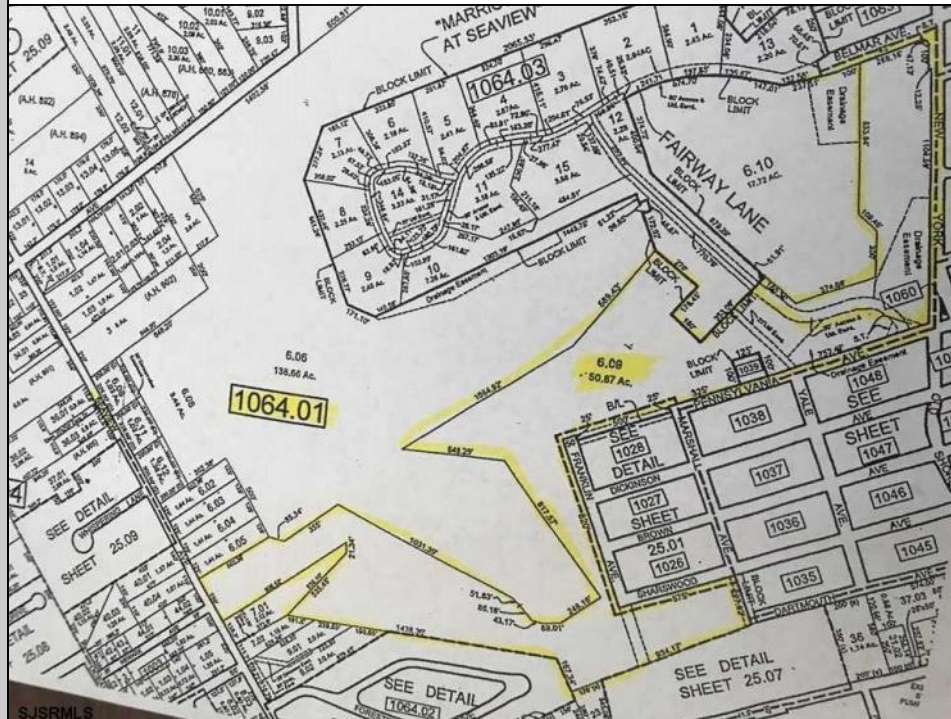


Berger Realty, Inc.
3160 Asbury Avenue
Ocean City, NJ 08226
1-877-237-4371 / 609-399-0076
info@bergerrealty.com



NEW YORK ROAD
Galloway Township, NJ 08205

Asking \$595,000.00



COMMENTS

DISCOVER THIS 50 + ACRE PROPERTY IN THE HEART OF GALLOWAY TOWNSHIP SURROUNDED BY SEAVIEW C.C. COMMERCIAL SECTION OF LOT WOULD BE IDEAL FOR A STRIP CENTER - W/APPROX. 1150+' OF FRONTAGE ON RT. 9. + SUB-DIVIDABLE LAND FOR RESIDENTIAL OPPORTUNITIES WITH SOME COUNTRY CLUB LOTS. THE LAND LOOPS ALL THE WAY FROM RT. 9 TO SEAVIEW AVE. & THEN SOME. SO MANY POSSIBILITIES. CLOSE TO SMITHVILLE, STOCKTON, PARKWAY AND ATLANTIC CITY. SELLING WELL BELOW ASSESSED VALUE! HURRY... CALL NOW!!! MANY

PROPERTY DETAILS



Ask for Veronica "Ronni" Vetro
Berger Realty Inc
3160 Asbury Avenue, Ocean City
Call: 609-399-0076
Email to: vrv@bergerrealty.com

