

# Berger Realty

Since 1928

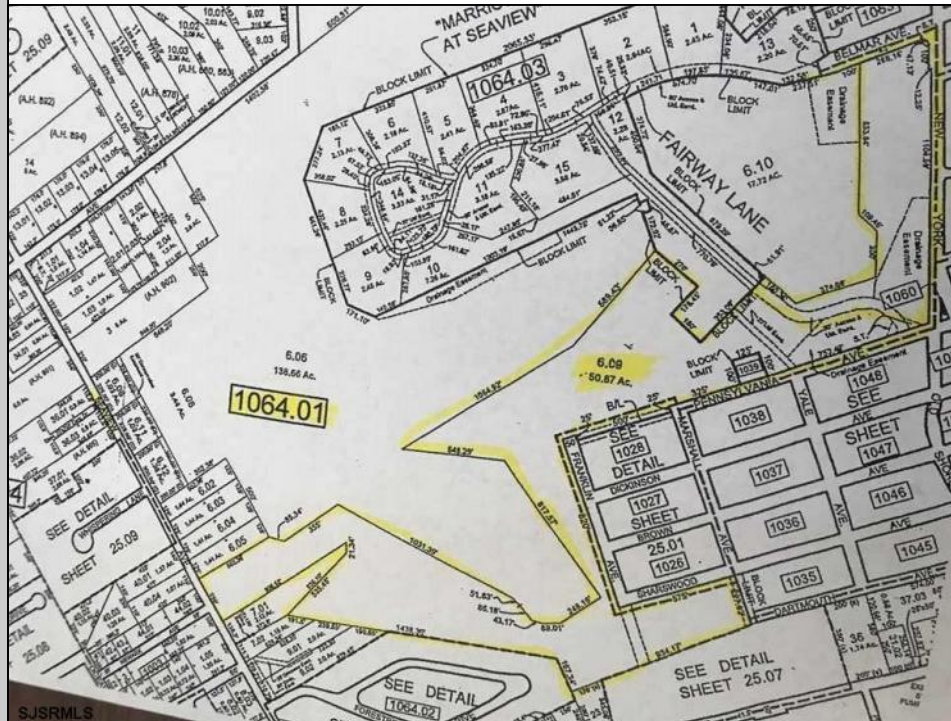


Berger Realty, Inc.  
3160 Asbury Avenue  
Ocean City, NJ 08226  
1-877-237-4371 / 609-399-0076  
info@bergerrealty.com



**NEW YORK ROAD**  
**Galloway Township, NJ 08205**

**Asking \$595,000.00**



## COMMENTS

DISCOVER THIS 50 + ACRE PROPERTY IN THE HEART OF GALLOWAY TOWNSHIP SURROUNDED BY SEAVIEW C.C. COMMERCIAL SECTION OF LOT WOULD BE IDEAL FOR A STRIP CENTER - W/APPROX. 1150+' OF FRONTAGE ON RT. 9. + SUB-DIVIDABLE LAND FOR RESIDENTIAL OPPORTUNITIES WITH SOME COUNTRY CLUB LOTS. THE LAND LOOPS ALL THE WAY FROM RT. 9 TO SEAVIEW AVE. & THEN SOME. SO MANY POSSIBILITIES. CLOSE TO SMITHVILLE, STOCKTON, PARKWAY AND ATLANTIC CITY. SELLING WELL BELOW ASSESSED VALUE! HURRY... CALL NOW!!! MANY

## PROPERTY DETAILS



Ask for Michael Maina  
Berger Realty Inc  
3160 Asbury Avenue, Ocean City  
Call: 609-399-0076  
Email to: mai@bergerrealty.com

