

Berger Realty

Since 1928

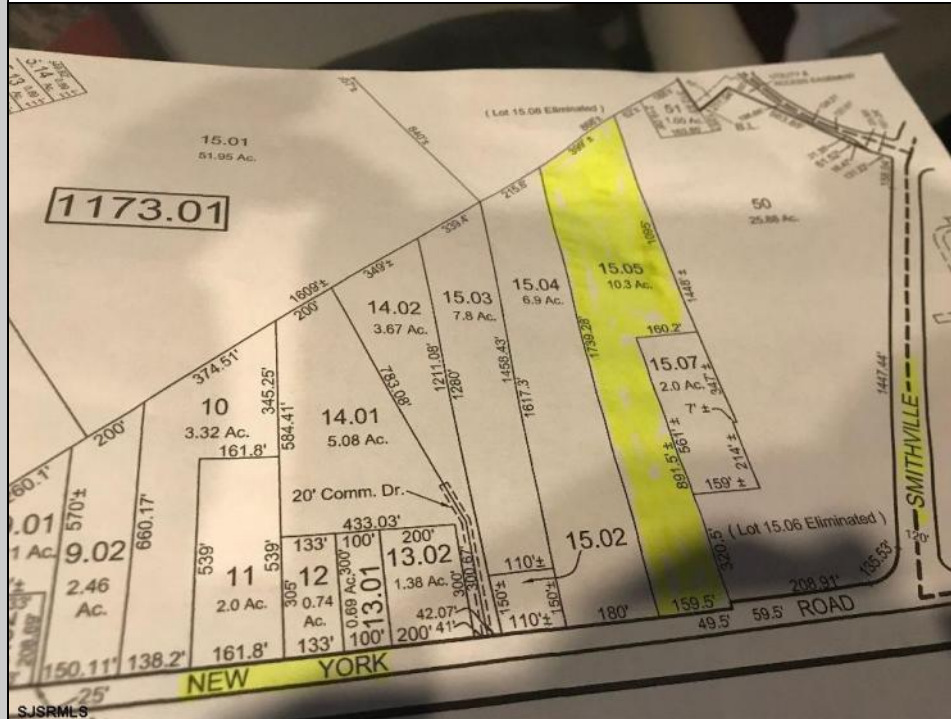


Berger Realty, Inc.
3160 Asbury Avenue
Ocean City, NJ 08226
1-877-237-4371 / 609-399-0076
info@bergerrealty.com



55 NEW YORK ROAD
Galloway Township, NJ 08205

Asking \$295,000.00



COMMENTS

COMMERCIAL DREAM LOT! DISCOVER THIS 10.31 ACRE PARCEL ON NEW YORK ROAD IN THE SMITHVILLE SECTION OF THE TOWNSHIP. PROPERTY IS JUST IN FRONT OF THE SMITHVILLE SHOPPING CENTER. GREAT FOR DRIVE - THRU RESTAURANTS, STRIP CENTERS, MULTI-BUILDINGS, OFFICES, HOTELS OR SO MUCH MORE...!!! HURRY CALL NOW!

PROPERTY DETAILS



Ask for Matthew Bader
Berger Realty Inc
3160 Asbury Avenue, Ocean City
Call: 609-399-0076
Email to: mhb@bergerrealty.com
http://www.BADERCOLLINS.com

