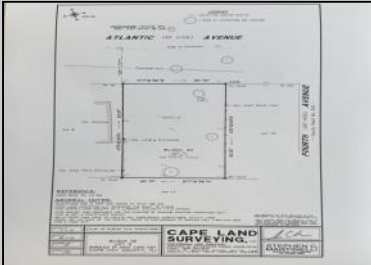


# Berger Realty

Since 1928



Berger Realty, Inc.  
3160 Asbury Avenue  
Ocean City, NJ 08226  
1-877-237-4371 / 609-399-0076  
info@bergerrealty.com



308 Atlantic  
West Cape May, NJ 08204

Asking \$450,000.00



#### COMMENTS

Build your dream beach cottage on this parcel located in West Cape May. Less than one mile to the Cape May Beaches, nature areas, walking paths, Willow Creek Winery, Real's and Beach Plum Farms. This is an undeveloped parcel located in the R1 Zoning Map; previous structure was demolished in 2012. Buyer is responsible for all permits and approvals.

#### PROPERTY DETAILS



Ask for Evelyn "Evie" Schweibinz  
Berger Realty Inc  
3160 Asbury Avenue, Ocean City  
Call: 609-399-0076  
Email to: [ems@bergerrealty.com](mailto:ems@bergerrealty.com)

