

Berger Realty

Since 1928

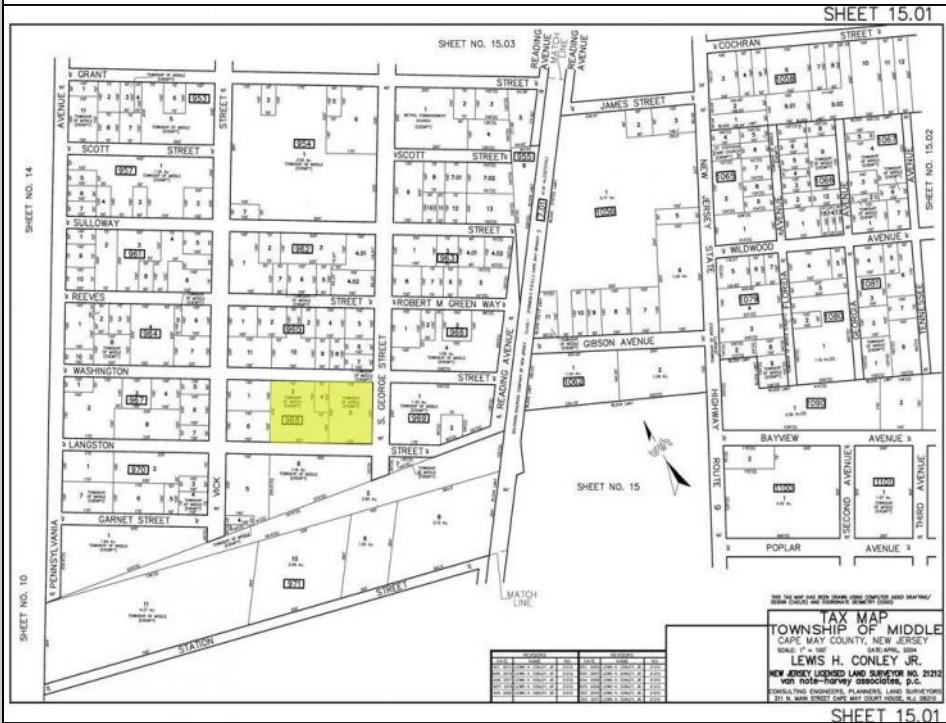
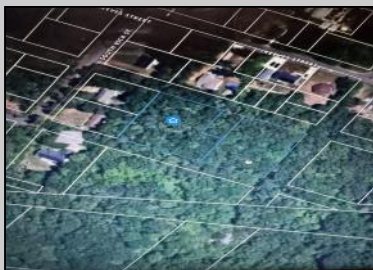
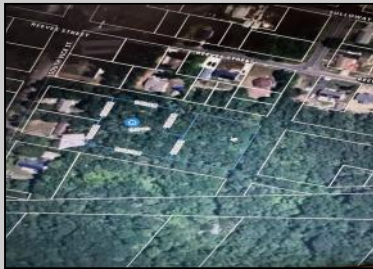


Berger Realty, Inc.
3160 Asbury Avenue
Ocean City, NJ 08226
1-877-237-4371 / 609-399-0076
info@bergerrealty.com



**Langston
Whitesboro, NJ 08252**

Asking \$100,000.00



COMMENTS

Prime opportunity to own 1.6 acres of serene, wooded land in one of Middle Township's most promising residential areas. This unique property is made up of three separate lots, giving you outstanding flexibility. Whether you're a builder looking for your next project, an investor seeking valuable land in a growth market, or a buyer dreaming of creating a private retreat. Surrounded by nature yet conveniently close to local amenities, schools, shopping, and major routes, this location strikes the perfect balance between peace and accessibility. With its natural beauty and endless potential, this is an ideal spot to craft your vision. Don't miss your chance to secure a versatile piece of land in a rapidly developing community. Opportunities like this are rare.

PROPERTY DETAILS



Ask for Patricia (Trish) Spengler
Berger Realty Inc
3160 Asbury Avenue, Ocean City
Call: 609-399-0076
Email to: pjs@bergerrealty.com

