

Berger Realty

Since 1928

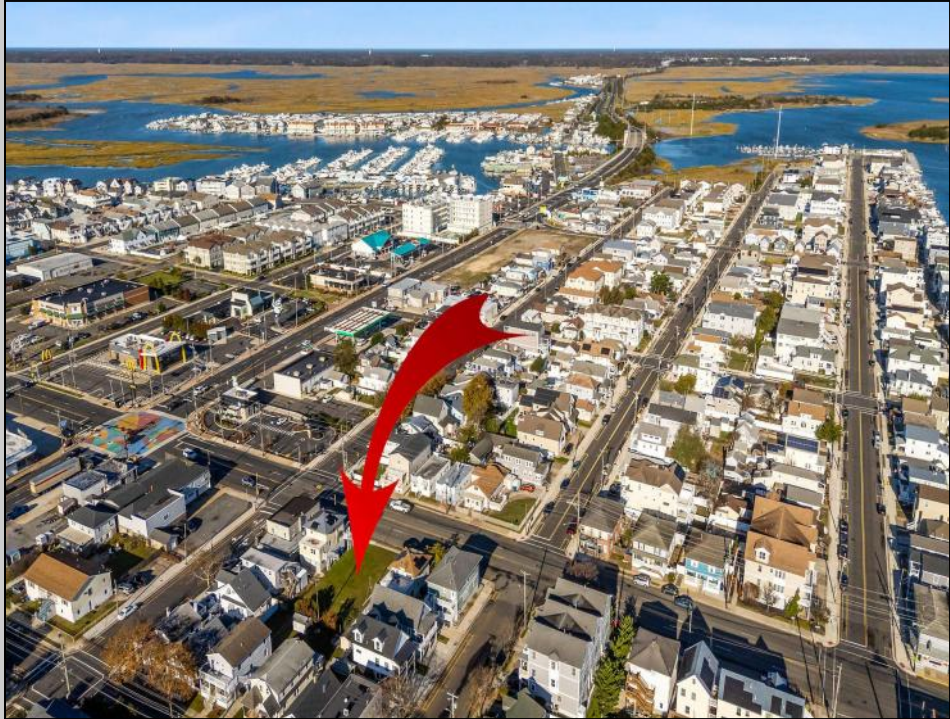


Berger Realty, Inc.
3160 Asbury Avenue
Ocean City, NJ 08226
1-877-237-4371 / 609-399-0076
info@bergerrealty.com



4705 Park
Wildwood, NJ 08260

Asking \$599,999.00



COMMENTS

Build your dream home on this 60' frontage by 95' deep lot, perfectly positioned for those who want to be on the island and close to local shops and restaurants. Take advantage of this blank slate when designing your house. Build a house that is massive enough to host firework parties on Friday nights in the summer, or if you would prefer you could build 2 townhomes and sell one and keep one. Get a friend to invest in this project and build one for each of you! Park Blvd is only 5 blocks to the beach and even closer to the bay. This location is a great choice for the boater that is looking to be close to area marinas. It is the perfect location for someone that wants to be close to local restaurants, marinas and parks to experience all that Wildwood has to offer.

PROPERTY DETAILS



Ask for J.K. Hepner, III
Berger Realty Inc
3160 Asbury Avenue, Ocean City
Call: 609-399-0076
Email to: jkh@bergerrealty.com

