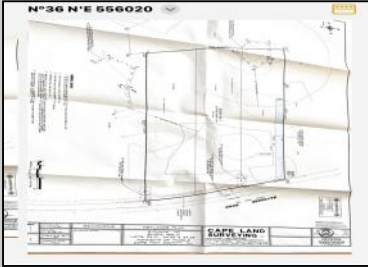


Berger Realty

Since 1928



Berger Realty, Inc.
3160 Asbury Avenue
Ocean City, NJ 08226
1-877-237-4371 / 609-399-0076
✉ info@bergerrealty.com



17 Bayshore
Green Creek, NJ 08219

Asking \$124,900.00



COMMENTS

Over an acre of land on Bayshore Road located a short drive to Norbury's Crossing Inlet of the Delaware bay and several properties down from Route 47. The seller recently obtained a wetlands delineation, and a majority of the buildable area is cleared. Great piece of ground to have a private compound. Purchase the lot at 19 Bayshore with the subject lot at 17 and make an oversized parcel. Seller will consider a discount for a combined purchase. Cape Land Survey Attached.

PROPERTY DETAILS



Ask for Sean McGinnis
Berger Realty Inc
3160 Asbury Avenue, Ocean City
Call: 609-399-0076
Email to: smc@bergerrealty.com

