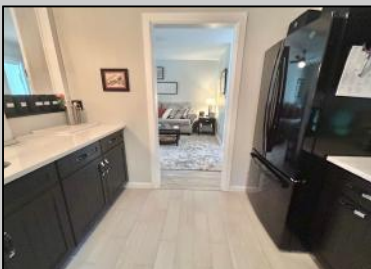




1420 Pennsylvania
Cape May, NJ 08204

Asking \$719,000.00



COMMENTS

Modern first-floor corner unit with an oversized screened porch and private yard view. Wonderful private rear corner with trees and green buffer. Features include an updated kitchen with black designer cabinets, quartz counters, Samsung appliances, and porcelain tile floors. The master has a private bath; the large guest room has access to a hall bath. Open plan living, dining, and kitchen areas. Sold turnkey, ready for immediate occupancy. Includes one assigned parking spot and guest parking. Never rented but rental is possible. Updates include a new furnace (2024), new ducts and AC (2016), and a whole-house dehumidifier. Home inspection and exclusion list available in associated documents. Seller offering \$1500 towards HWH which is working but older.

PROPERTY DETAILS

ParkingGarage	OtherRooms	AppliancesIncluded	AlsoIncluded
Assigned Parking	Living Room	Range	Blinds
	Eat In Kitchen	Oven	Partial Furniture
	Dining Area	Microwave Oven	
	Other	Refrigerator	
	1st Floor	Master Washer	
	Bedroom	Dryer	
		Dishwasher	
		Disposal	



Call for Veronica Romero Vetro
Berger Realty Inc.
3160 Asbury Avenue, Ocean City
Call: 609-399-0076
Email to: vrv@bergerrealty.com

Water
City

