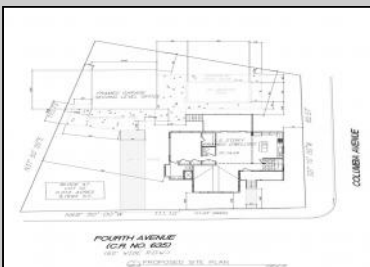




**401 Fourth
West Cape May, NJ 08204**

Asking \$1,995,000.00



COMMENTS

Beautifully Renovated West Cape May Home with Modern Amenities! Expertly remodeled from top to bottom, this stunning 4-bedroom, 2.5-bath home blends timeless charm with modern comforts. Situated on a spacious corner lot just under 10,000 sq ft, the property boasts an array of desirable features: Luxurious Outdoor Amenities: Enjoy summer days around the in-ground pool, relax on the screened-in rear porch, or unwind on the open front porch. Versatile Detached Garage: A large garage includes a finished office space with bathroom above—perfect for remote work or guest accommodations. Thoughtful Interior Design: The open-concept layout includes multiple living spaces and a dramatic cathedral ceiling in the living room, creating an airy, inviting atmosphere. Private Main Suite: Located on the first floor, the main suite includes a spacious en-suite bath with a tiled shower and seamless glass doors. Second-Level Comfort: Upstairs, three additional bedrooms and a full hall bath provide plenty of space for guests. Additional highlights include James Hardi siding, PVC trim board and window casings, composite decking, professional landscaping with irrigation. With ample parking and a prime location in West Cape May, this turn-key home offers the perfect blend of elegance, functionality, and beach town charm.

PROPERTY DETAILS

Outside Features	Parking/Garage	Other Rooms	Interior Features
Porch	Garage	Living Room	Cathedral Ceilings
Outside Shower	2 Car	Eat-In-Kitchen	Wood Flooring
	Detached	Great Room	Smoke/Fire Alarm
	See Remarks	Storage Attic	Storage
	4 car parking	See Remarks	Walk in Closet
		1st Floor Bedroom	

Asbury Creek
Berger Realty Inc.
3160 Asbury Avenue
Call: 609-399-0076

Email to: caw@bergerrealty.com

Basement: Partial
 Inside Entrance
 Masonry Floors/Wall
 See Remarks

Gas Natural
 Forced Air
 Multi-Zoned

Primary Bedroom

Call: 609-399-0076

See Remarks



HotWater
Gas- Natural

Water
City

Sewer
City