

Berger Realty

Since 1928

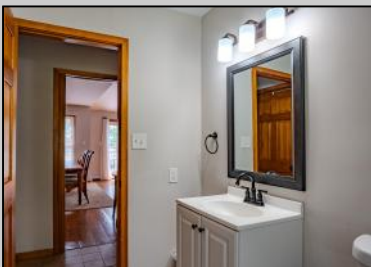


Berger Realty, Inc.
3160 Asbury Avenue
Ocean City, NJ 08226
1-877-237-4371 / 609-399-0076
info@bergerrealty.com



970 Shirley
Erma, NJ 08204

Asking \$485,000.00



COMMENTS

Welcome to this custom-built 2-story home set on nearly half an acre in the heart of Erma. Featuring a vaulted living room with exposed beams and a brick wood-burning fireplace, this inviting property offers warmth, space, and character throughout. The kitchen includes a center island, gas range, and open flow to the dining area. Step outside to a backyard deck with a natural gas grill hookup — perfect for outdoor cooking and casual gatherings. Additional features include a central vacuum system, solar panel system (PPA), leveled hardscaping, 240V electric panel upgrade, and a garage for additional storage or workspace. Ideally located just minutes from Cape May beaches, wineries, and local amenities — a great blend of privacy and coastal convenience.

PROPERTY DETAILS

Exterior	OutsideFeatures	ParkingGarage	OtherRooms
Wood	Deck	1 Car	Living Room
Solar Panels-Leased	Grill	Attached	Dining Room
	Fenced Yard	Auto Door Opener	Kitchen
		Black Top Driveway	Den/TV Room
			Eat-In-Kitchen
			Laundry/Utility Room
InteriorFeatures	AppliancesIncluded	AlsoIncluded	Basement
	Oven	Curtains	Crawl Space
	Refrigerator		
	Washer		
	Dryer		
	Dishwasher		
	Smoke/Fire Detector		
	Stove Natural Gas		



Ask for Tara Cruser-Moss
Berger Realty Inc
3160 Asbury Avenue, Ocean City
Call: 609-399-0076
Email: tcruserm@bergerrealty.com



Baseboard

Cooling
Central Air Condition

HotWater
Electric

Water
Well

Sewer
Public