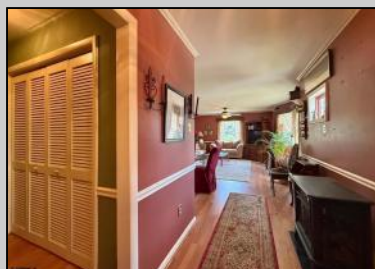


Berger Realty

Since 1928



Berger Realty, Inc.
3160 Asbury Avenue
Ocean City, NJ 08226
1-877-237-4371 / 609-399-0076
info@bergerrealty.com



604 Keats
Beesleys Point, NJ 08223

Asking \$519,000.00



SJSRMLS

COMMENTS

Location, location, location! This rancher is tucked away on a prime corner lot in the coveted Beesley's Point section of Upper Twp. Short walking distance to the Tuckahoe Inn and Upper Twp beach section. 3 bedrooms, 1.5 baths, gas heat, central air, Florida Room w/bar, attached garage. Perfect find for year-round or seasonal home sweet home; come take a look.

PROPERTY DETAILS

Exterior	Outside Features	Parking/Garage	Other Rooms
Vinyl	Porch	1.5 Car	Living Room
	Fenced Yard	Attached	Dining Room
	Outside Shower	Auto Door Opener	Workshop
		Heated Garage	Florida Room
		Concrete Driveway	Storage Attic
			1st Floor Primary Bedroom
Interior Features	Appliances Included	Also Included	Basement
Bar	Refrigerator	Blinds	Crawl Space
Fireplace- Gas	Washer		
Smoke/Fire Alarm	Dryer		
Storage	Stove Electric		



Ask for Patricia Moss
Berger Realty Inc.
3160 Asbury Avenue, Ocean City
Call: 609-399-0076
Email to: tcm@bergerrealty.com

Water
Well

