

Berger Realty

Since 1928



Berger Realty, Inc.
3160 Asbury Avenue
Ocean City, NJ 08226
1-877-237-4371 / 609-399-0076
info@bergerrealty.com



645 Spruce
North Wildwood, NJ 08260

Asking \$1,050,000.00



Plans & renderings subject to change



Plans & renderings subject to change



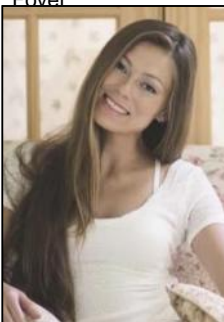
Plans & renderings subject to change

COMMENTS

Welcome to this exquisite new construction upside-down townhome, ideally located in the sought-after Anglesea section of North Wildwood, offering tranquil water views and spectacular sunsets. With 4 spacious bedrooms and 3.5 bathrooms, this home seamlessly blends style and functionality. The open concept living area is accentuated by vaulted ceilings and hardwood flooring throughout, creating an airy, welcoming atmosphere. The gourmet kitchen features a stainless-steel appliance package, an island with elegant stone countertops, and custom Legacy brand cabinetry. The bathrooms are adorned with an extensive tile package, adding a touch of luxury to every space. Enjoy outdoor living on the expansive deck, perfect for relaxing or entertaining while taking in the beautiful surroundings. Built with durability in mind, the home is finished with James Hardie siding, ensuring longevity and low maintenance. A spacious garage completes this exceptional home, providing plenty of storage. Embrace coastal living at its finest in this meticulously crafted townhome! Construction underway with an estimated completion Spring 2026.

PROPERTY DETAILS

UnitFeatures	ParkingGarage	OtherRooms	AppliancesIncluded
Kitchen Island	Auto Door Opener	Living Room	Range
Walk-In/Cedar Closet	Garage	Kitchen	Oven
Hardwood Floors	1 Car	Eat In Kitchen	Microwave Oven
Foyer	Concrete Driveway	Dining Area	Refrigerator
		Laundry/Utility Room	Dishwasher
			Disposal
			Smoke/Fire Detector
			Stainless Steel



City

Ask for Margarita Kobilianets
Berger Realty Inc
3160 Asbury Avenue, Ocean City
Call: 609-399-0076

Email to: mak@bergerrealty.com
Central Air
Multi Zoned

