

# Berger Realty

Since 1928



Ocean 17  
1670 Boardwalk  
Ocean City, NJ 08226  
609-391-0500

[oc17@BergerRealty.com](mailto:oc17@BergerRealty.com)



310 42nd  
Sea Isle City, NJ 08243

Asking \$1,299,000.00

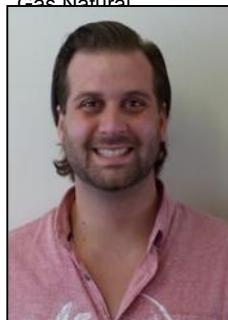


## COMMENTS

Welcome to your waterfront oasis at 310 42nd Place, Sea Isle City, NJ! This stunning two-story new construction unit at the gateway to Sea Isle City has just completed and ready for you to move in. Located conveniently near the vibrant "Fish Alley," you'll have easy access to all the local dining and entertainment options. The property boasts amazing views in every direction and is a paradise for vacation lovers and those who enjoy a lifestyle on the water. Enjoy the convenience of one boat slip and two parking spots, ensuring you and your guests can fully embrace the coastal lifestyle. Interested in more space? Ask about the option to combine units 2 East and 2 West into a spacious 4-bedroom, 4-bath unit. Come see this vacation haven today!

## PROPERTY DETAILS

UnitFeatures	ParkingGarage	OtherRooms	AppliancesIncluded
Hardwood Floors	Assigned Parking	Living Room	Range
Cathedral Ceiling	Concrete Driveway	Dining Room	Oven
		Kitchen	Refrigerator
			Washer
			Dryer
			Dishwasher
Heating	Cooling	HotWater	Water
Gas Natural	Central Air	Gas	City



Ask for Colin Halliday  
Berger Realty Inc  
1670 Boardwalk, Ocean City  
Call: 609-391-0500  
Email to: [ceh@bergerrealty.com](mailto:ceh@bergerrealty.com)

