

# Berger Realty

Since 1928

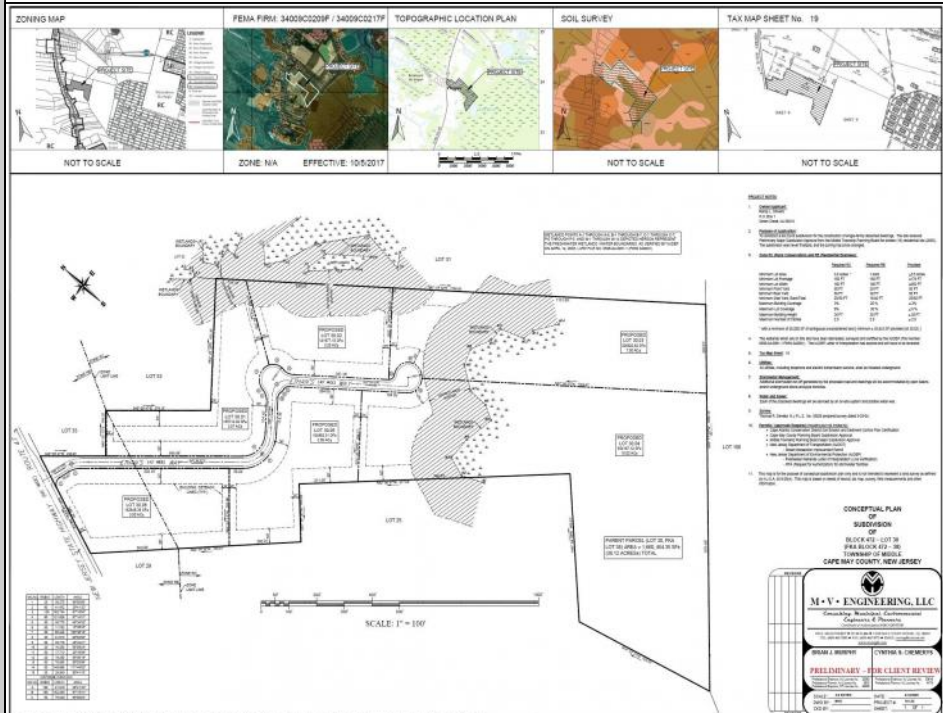


Berger Realty, Inc.  
3160 Asbury Avenue  
Ocean City, NJ 08226  
1-877-237-4371 / 609-399-0076  
info@bergerrealty.com



290 Route 47 South  
Cape May Court House, NJ 08210

Asking \$1,349,000.00



## COMMENTS

PRELIMINARY PLANS FOR A 6 LOT SUBDIVISION - EACH LOT IS A MINIMUM 3.5 ACRES. Extremely Large parcel of land in Cape May County with a significant portion of upland to use. Let your vision be your guide. Currently zoned Residential Business. drawn property lines are approximate.

## PROPERTY DETAILS



Ask for Norman Hartzel  
Berger Realty Inc  
3160 Asbury Avenue, Ocean City  
Call: 609-399-0076  
Email to:

