

Berger Realty

Since 1928

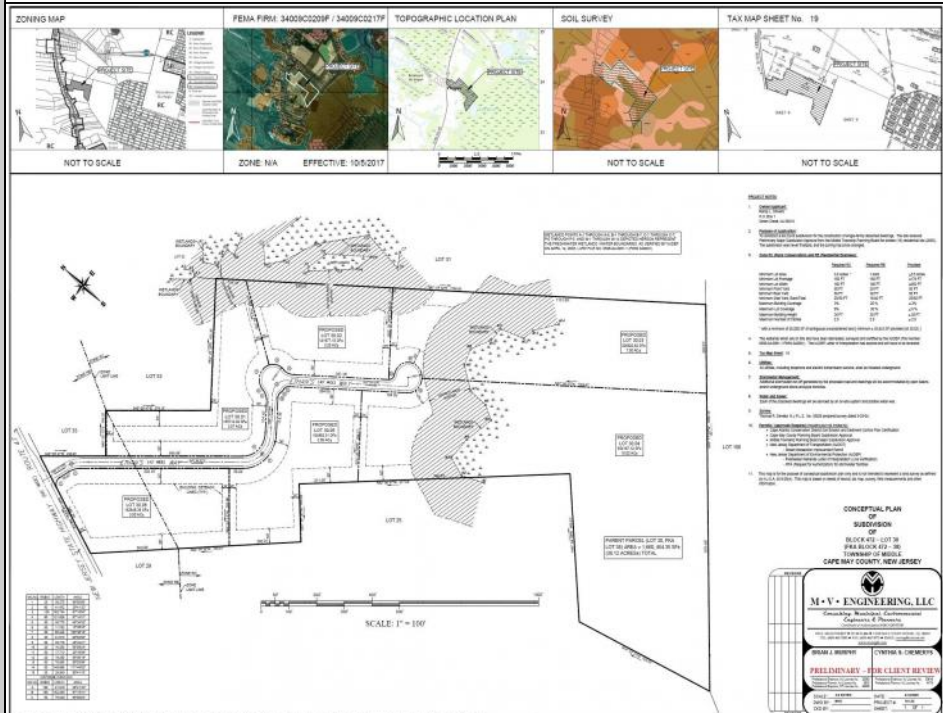


Berger Realty, Inc.
 3160 Asbury Avenue
 Ocean City, NJ 08226
 1-877-237-4371 / 609-399-0076
 info@bergerrealty.com



**290 Route 47 South
 Cape May Court House, NJ 08210**

Asking \$1,349,000.00



COMMENTS

PRELIMINARY PLANS FOR A 6 LOT SUBDIVISION - EACH LOT IS A MINIMUM 3.5 ACRES. Extremely Large parcel of land in Cape May County with a significant portion of upland to use. Let your vision be your guide. Currently zoned Residential Business. drawn property lines are approximate.

PROPERTY DETAILS



Ask for Michael Devlin
 Berger Realty Inc
 3160 Asbury Avenue, Ocean City
 Call: 609-399-0076
 Email to: msd@bergerrealty.com

