

Berger Realty

Since 1928



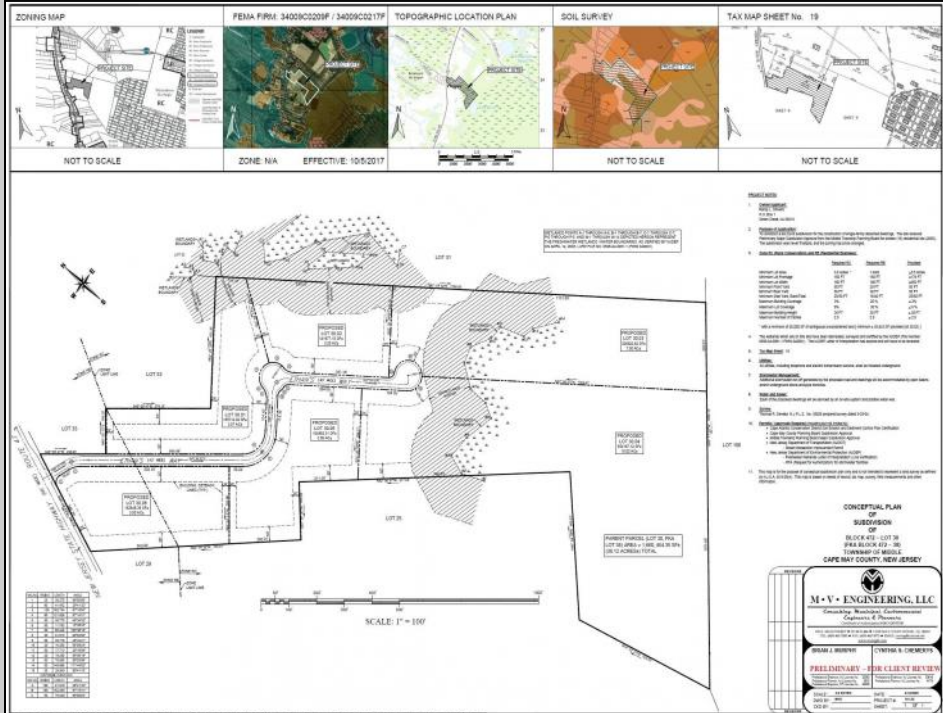
Berger Realty, Inc.
55th & Haven Avenue
Ocean City, NJ 08226
609-399-0040

info@bergerrealty.com



290 Route 47 South
Cape May Court House, NJ 08210

Asking \$1,349,000.00



COMMENTS

PRELIMINARY PLANS FOR A 6 LOT SUBDIVISION - EACH LOT IS A MINIMUM 3.5 ACRES. Extremely Large parcel of land in Cape May County with a significant portion of upland to use. Let your vision be your guide. Currently zoned Residential Business. drawn property lines are approximate.

PROPERTY DETAILS



Ask for Kevin Halliday
Berger Realty Inc
109 E 55th St., Ocean City
Call: 609-399-4211
Email to: keh@bergerrealty.com

