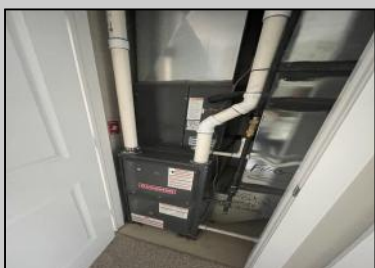




2102 Oak
Vineland, NJ 08361

Asking \$284,900.00



COMMENTS

Move-in ready, unit E2 in Kings Crossing Association. This townhouse features bonus room, mechanical closets and half bathroom on first floor. Open floor kitchen with peninsula and stainless-steel appliances, dining area and sitting area are located on the second floor. Additional half-bathroom is located off kitchen. Primary bedroom has separate bathroom and walk-in closet; additional 2 bedrooms are also located on the top floor with hallway bathroom and laundry closet. This townhouse has one car attached garage, and off-street parking pad.

PROPERTY DETAILS

UnitFeatures	ParkingGarage	OtherRooms	AppliancesIncluded
Wall To Wall Carpet	Garage	Kitchen	Range
Tile Floors	Parking Pad	Breakfast Nook	Microwave Oven
Laminate Flooring	Attached	Dining Area	Refrigerator
			Washer
			Dryer
			Dishwasher
			Smoke/Fire Detector
			Stainless Steel Appliance
Heating	Cooling	HotWater	Water
Gas Natural	Central Air	Electric	Public
Forced Air			
Sewer			
Public			

