

Berger Realty

Since 1928



Berger Realty, Inc.
3160 Asbury Avenue
Ocean City, NJ 08226
1-877-237-4371 / 609-399-0076
info@bergerrealty.com



**4200 Central Ave
Sea Isle City, NJ 08243**

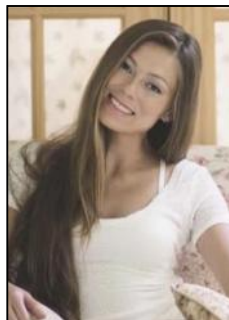
Asking \$1,299,000.00



COMMENTS

LOT in the Heart of Sea Isle City – 4200 Central Ave A unique opportunity to own a buildable LOT in the heart of Sea Isle City! Please Note: The existing structure on the lot will be removed prior to settlement, per a determination by the City of Sea Isle City due to a prior subdivision. This versatile 55' x 75' lot offers endless possibilities to build your dream single-family home in a prime location. Enjoy the convenience of being just steps away from top-rated restaurants, shopping, entertainment, and all that Sea Isle has to offer! Whether you're a builder, investor, or looking to create your own custom beach retreat, this is a rare chance to secure a centrally located property in one of the most sought-after areas of town. Don't miss out—build the single-family home of your dreams today!

PROPERTY DETAILS



Ask for Margarita Kobilianets
Berger Realty Inc
3160 Asbury Avenue, Ocean City
Call: 609-399-0076
Email to: mak@bergerrealty.com

