

# Berger Realty

Since 1928



Berger Realty, Inc.  
3160 Asbury Avenue  
Ocean City, NJ 08226  
1-877-237-4371 / 609-399-0076  
info@bergerrealty.com



1300 Asbury  
Ocean City, NJ 08226

Asking \$315,999.00

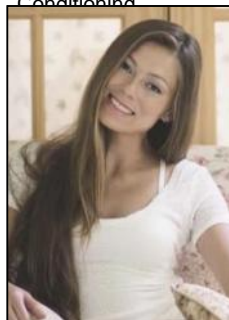


## COMMENTS

Unlock the potential of this 1,000+ sq. ft. commercial space in the heart of downtown Ocean City! Positioned on a bustling street with heavy foot traffic, this versatile property is perfect for retail, office, or service-based businesses looking to thrive in a premier shore town. This exceptional commercial space is currently ready for an eye doctor's office, offering a seamless transition for an optometry or ophthalmology practice. The thoughtfully designed layout includes exam rooms, a reception area, workshop area, and a spacious optical display/showroom. Featuring both an open layout and large display windows for premium advertising, this space offers endless possibilities for customization. Surrounded by established businesses, this is an incredible opportunity to secure a high-exposure location in one of the Jersey Shore's most sought-after commercial districts. Don't miss out—schedule a showing today!

## PROPERTY DETAILS

ParkingGarage	OtherRooms	InteriorFeatures	Heating
1 To 5 Spaces	Utility Room	Restroom	Gas Natural
Off Street		Smoke/Fire Alarm	Forced Air
Assigned Parking		Storage	
Cooling	HotWater	Water	Sewer
Central	Air Gas	Public	Public
Conditioning			



Ask for Margarita Kobilianets  
Berger Realty Inc  
3160 Asbury Avenue, Ocean City  
Call: 609-399-0076  
Email to: mak@bergerrealty.com

