

Berger Realty

Since 1928



Berger Realty, Inc.
3160 Asbury Avenue
Ocean City, NJ 08226
1-877-237-4371 / 609-399-0076
info@bergerrealty.com



1252 109
Lower Township, NJ 08204

Asking \$1,195,000.00

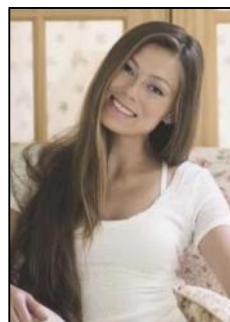


COMMENTS

Detached stand-alone building part of a 2-building condo association. It is located across from the water and surrounded by a desirable and expanding marina district. Currently, a mixed-use space with three offices, a reception area, a powder room, and a recreation space is rented month to month. The 3-bedroom, 2-bath area has a fantastic rental history. Use it all as residential or use the space to meet your needs. There are seven parking spots. With up to 5/6 bedrooms, the property offers flexibility. Use the apartment or office space and rent the other half, or combine as just a single family. Over the Cape May Bridge with full access to the island. Take a look today!

PROPERTY DETAILS

Unit	Features	Parking	Garage	Other Rooms	Appliances Included
	Hardwood Floors	Assigned Parking		Living Room	Range
		Stone Driveway		Kitchen	Microwave Oven
				Dining Area	Refrigerator
					Washer
					Dryer
					Dishwasher
					Stainless Steel
					Appliance



Heating Gas Ask for Margarita Kobianets
Cooling Multi-Zoned
Berger Realty Inc
3160 Asbury Avenue, Ocean City
Call: 609-399-0076
Sewer City
Email to: mak@bergerrealty.com

