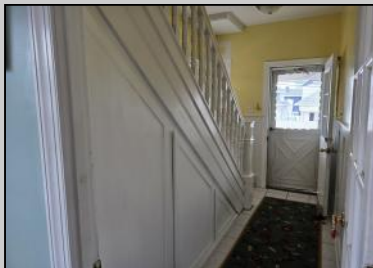
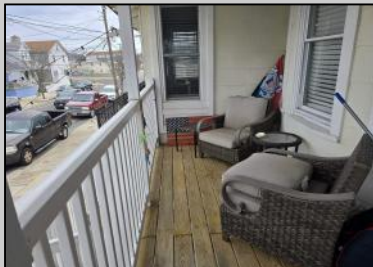


Berger Realty

Since 1928



Berger Realty, Inc.
3160 Asbury Avenue
Ocean City, NJ 08226
1-877-237-4371 / 609-399-0076
info@bergerrealty.com



110 Maple
Wildwood, NJ 08260

Asking \$659,000.00



COMMENTS

This DUPLEX sits on a 30X90 fenced in lot with off street parking for 2 cars. The backyard is maintenance free (concrete) and has 2 sheds. The 1st unit is on the ground floor it's a 2 Bedroom 1 Bathroom, living room, kitchen (Stove, Refrigerator) and a Bonus large closet that can be transformed into a large Walk in Pantry or a large Walk in Closet. Outside steps lead up to the Front Porch and the 2nd unit, the 1st floor has a nice size kitchen (that leads out to the back deck) with Stainless Steel Appliances (Refrigerator, Dishwasher and Gas Stove) also Butcher Block Countertops, a Dining Room, Living Room, Den/Office with a Large Closet and a Full Bathroom with (Washer and Dryer). Upstairs is a 3 Bedroom 2 Bathroom (1 of the bedrooms is used as a Dressing Room /Closet) which can easily convert back to a bedroom, Full Bathroom, Linen Closet and Attic. MAKE YOUR APPOINTMENT TODAY!!!

PROPERTY DETAILS

OutsideFeatures	ParkingGarage	OtherRooms	AlsoIncluded
Deck	Parking Pad	Living Room	Blinds
Porch	2 Car	Dining Room	
Fenced Yard		Kitchen	
Storage Building		Den/TV Room	
		Eat In Kitchen	
		Laundry/Utility Room	
		Storage Space	



Ask for Chris Warden
Berger Realty Inc.
3160 Asbury Avenue, Ocean City
Call 609-399-0076
Email to: caw@bergerrealty.com

Sewer
City

HotWater
Gas

