

Berger Realty

Since 1928

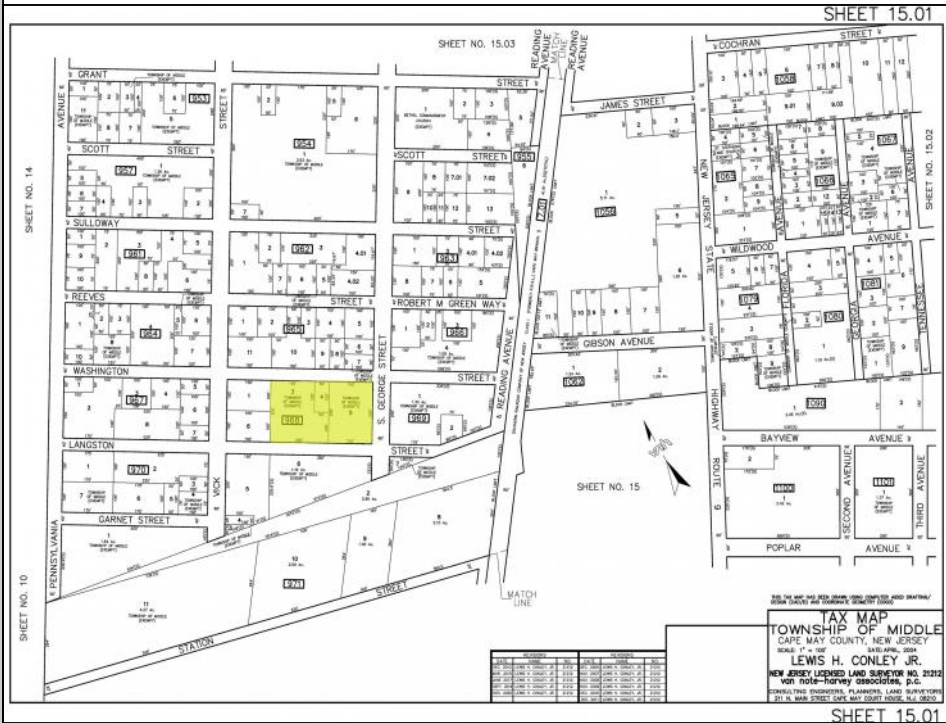


Berger Realty, Inc.
3160 Asbury Avenue
Ocean City, NJ 08226
1-877-237-4371 / 609-399-0076
info@bergerrealty.com



Langston
Whitesboro, NJ 08252

Asking \$150,000.00



COMMENTS

Prime opportunity to own 2 acres of wooded land in an up and coming residential area of Middle Township. The property consists of 3 separate lots, offering flexibility for development or a private retreat. Nestled in a peaceful, natural setting, yet conveniently located near local amenities, schools, and major routes. Ideal for builders, investors, or those seeking to build their dream home. Don't miss this chance to secure a piece of land in a growing community.

PROPERTY DETAILS



Ask for Louis Ripa
Berger Realty Inc
3160 Asbury Avenue, Ocean City
Call: 609-399-0076
Email to: lcr@bergerrealty.com

