

# Berger Realty

Since 1920

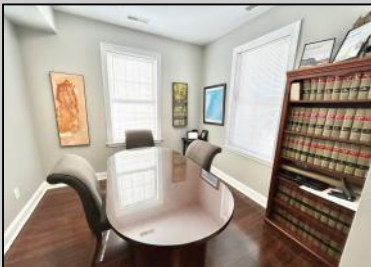


Berger Realty, Inc.  
3160 Asbury Avenue  
Ocean City, NJ 08226  
1-877-237-4371 / 609-399-0076  
info@bergerrealty.com



1252 Route 109  
Lower Township, NJ 08204

Asking \$1,145,000.00



## COMMENTS

Detached stand-alone building part of a 2-building condo association. It is located across from the water and surrounded by a desirable and expanding marina district. Currently, a mixed-use space with three offices, a reception area, a powder room, and a recreation space is rented month to month. The 3-bedroom, 2-bath area is rented for 2025. Use it all as residential or use the space to meet your needs. There are seven parking spots. With up to 5/6 bedrooms, the property offers flexibility. Use the apartment or office space and rent the other half, or combine as just a single family. Over the Cape May Bridge with full access to the island. \$25,000 credit towards new roof and updates. Take a look today!

## PROPERTY DETAILS

Exterior Wood/Frame	OutsideFeatures Sign	ParkingGarage 6 To 10 Spaces	OtherRooms Office Space Avail Public Restroom
InteriorFeatures Restroom Smoke/Fire Alarm	Heating Gas Natural Multi-Zoned	Cooling Central Conditioning Multi-Zoned	HotWater Air Gas



Sewer  
City  
Ask for Tara Crusier-Moss  
Berger Realty Inc  
3160 Asbury Avenue, Ocean City  
Call: 609-399-0076  
Email to: tcm@bergerrealty.com

