

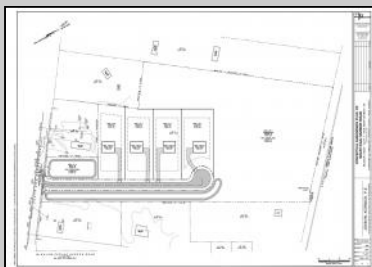
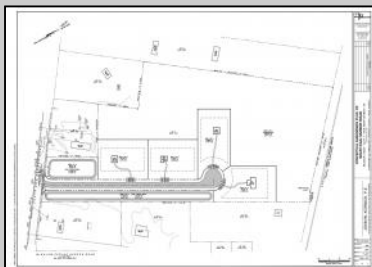
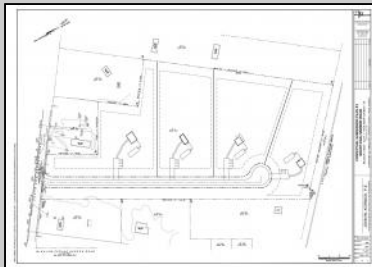
# Berger Realty

Since 1928



Berger Realty, Inc.  
55th & Haven Avenue  
Ocean City, NJ 08226  
609-399-0040

info@bergerrealty.com



0 South Egg Harbor  
Winslow Township, NJ 08037

Asking \$125,000.00



Property dimensions and locations are approximate, not exact.  
Deemed reliable but not guaranteed. Based on CRS Data.  
For advertising purposes only.

## COMMENTS

14 + Acres located in Winslow Twp, Hammonton area in PR1 zoning in a Pinelands Rural Development Area. Rural Residential Zoning permitted uses allow single family on 3.2 acres lots (possible 4 lots) or 1 Acre cluster development , agriculture, forestry, roadside retail and service,. Sale is as is where is seller makes no representation to the feasibility of subdividing the property but have begun working with an engineer see attached concept plans and building designs. No Wetlands.

## PROPERTY DETAILS



Ask for Stewart Vaughan  
Berger Realty Inc  
109 E 55th St., Ocean City  
Call: 609-399-4211  
Email to: smv@bergerrealty.com

