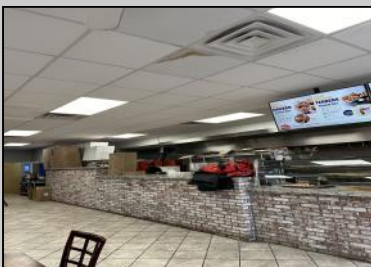
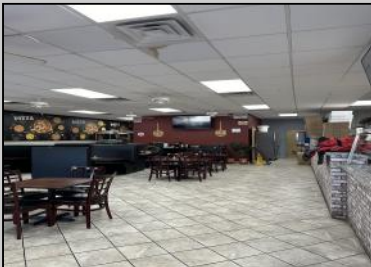


Berger Realty

Since 1928



Berger Realty, Inc.
3160 Asbury Avenue
Ocean City, NJ 08226
1-877-237-4371 / 609-399-0076
info@bergerrealty.com



709 Route 9 S
Cape May Court House, NJ 08201

Asking \$299,000.00



COMMENTS

Here's your chance to own a well-established pizza business located on highly trafficked Route 9 in Cape May Court House, New Jersey. This desirable location offers exceptional visibility and consistent traffic, making it a prime spot for success. The sale includes all equipment, making it easy for the new owner to step in and start operating immediately. The business operates in a well-maintained leased space, with the new owner assuming the current lease terms. This is a highly profitable operation with strong financials. Profit and loss statements are available to qualified buyers upon request. Whether you're a seasoned restaurateur or ready to dive into the food business, this turn-key opportunity provides everything you need to hit the ground running. Don't miss out on this chance to own a thriving business in a sought-after area! Contact us today for more details or to schedule a showing.

PROPERTY DETAILS

Exterior Block	ParkingGarage 11 Or More Spaces Off Street	InteriorFeatures Restroom	Heating Gas Natural Forced Air
Cooling Central Conditioning	Water Air Public	Sewer Public	



Ask for Tanya Pinkerton
Berger Realty Inc
3160 Asbury Avenue, Ocean City
Call: 609-399-0076
Email to: tp@bergerrealty.com

