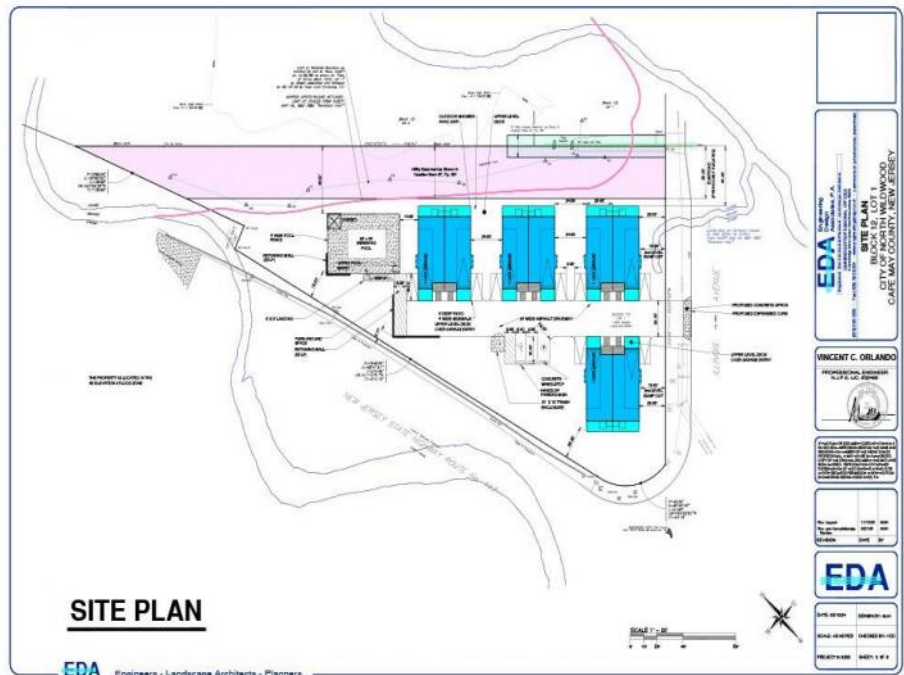




800 Spruce
North Wildwood, NJ 08260

Asking \$2,500,000.00



COMMENTS

Fully approved for 8 - 2400 +- sq. ft townhomes. Development is approved for large pool facility and plenty of parking. Water views from all angles and perfectly located in Anglesea with easy access to and from our island. See concept plan attached. Contact listing broker for all details

PROPERTY DETAILS



Ask for Linda Watts
Berger Realty Inc
1670 Boardwalk, Ocean City
Call: 609-391-0500
Email to: ljw@bergerrealty.com

