

# Berger Realty

• Since 1928 •



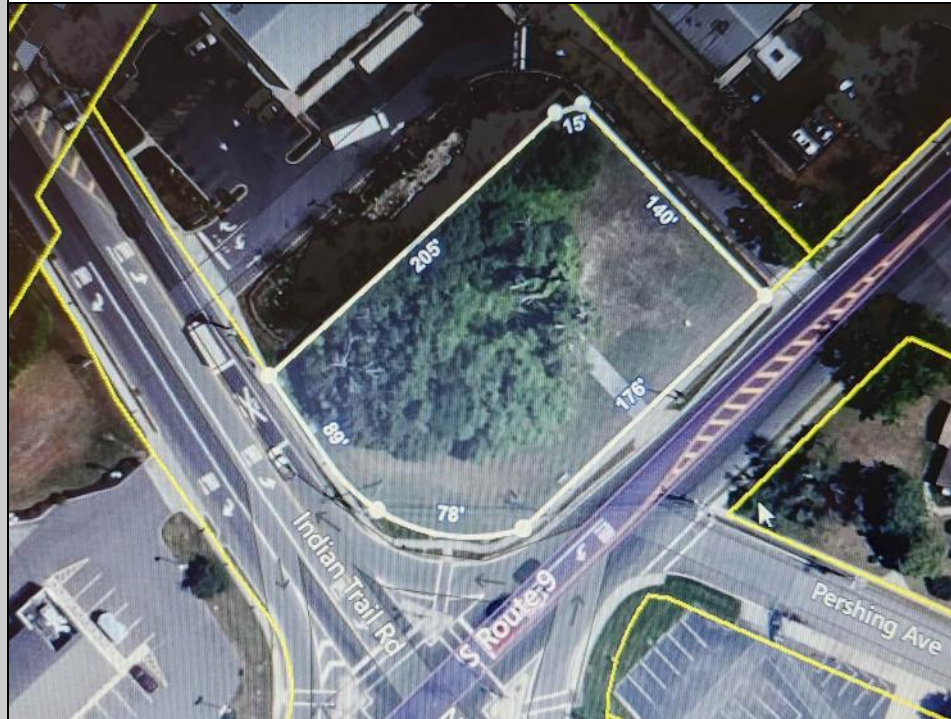
Ocean 17  
1670 Boardwalk  
Ocean City, NJ 08226  
609-391-0500

✉ [oc17@BergerRealty.com](mailto:oc17@BergerRealty.com)



1263 Route 9 S  
Cape May Court House, NJ 08210

Asking \$250,000.00



#### COMMENTS

Prime location with this 0.72-acre Commercial Lot located on Route 9. The new Grapevine Plaza development across the street on Rt. 9. Home Depot is just around the corner in this thriving business sector. Flexible Town Business Zone allows for a variety of business opportunities including Retail, Restaurants, Professional Offices, Mixed-Use, Health Care etc. Priced to sell well below assessed value.

#### PROPERTY DETAILS



Ask for Grant Halliday  
Berger Realty Inc  
1670 Boardwalk, Ocean City  
Call: 609-391-0500  
Email to: [geh@bergerrealty.com](mailto:geh@bergerrealty.com)

