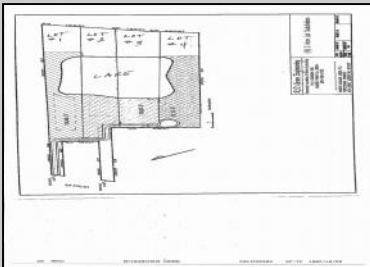
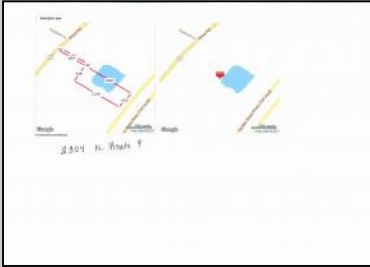


Berger Realty

Since 1928



Berger Realty, Inc.
3160 Asbury Avenue
Ocean City, NJ 08226
1-877-237-4371 / 609-399-0076
info@bergerrealty.com



2304 Route 9
Ocean View, NJ 08210

Asking \$899,900.00



COMMENTS

Potential Development Opportunity! Two Adjacent Lots Available in Dennis Twp. 2304 and 2316 N. Route 9, approximately 21 acres with a pond on the property. Within a few miles of Avalon, Sea Isle and Stone Harbor. All approvals, inspections and applications needed are the responsibility of the buyer.

PROPERTY DETAILS



Ask for Theresa Maina
Berger Realty Inc
3160 Asbury Avenue, Ocean City
Call: 609-399-0076
Email to: tam@bergerrealty.com

