

# Berger Realty

Since 1928

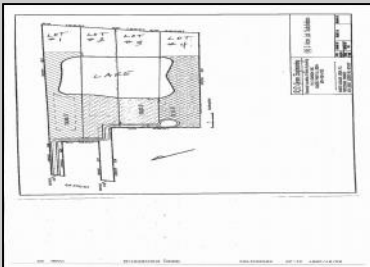
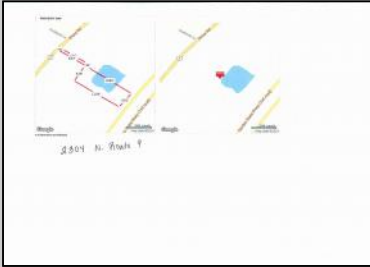


Berger Realty, Inc.  
3160 Asbury Avenue  
Ocean City, NJ 08226  
1-877-237-4371 / 609-399-0076  
info@bergerrealty.com



2304 Route 9  
Ocean View, NJ 08210

Asking \$899,900.00



#### COMMENTS

Potential Development Opportunity! Two Adjacent Lots Available in Dennis Twp. 2304 and 2316 N. Route 9, approximately 21 acres with a pond on the property. Within a few miles of Avalon, Sea Isle and Stone Harbor. All approvals, inspections and applications needed are the responsibility of the buyer.

#### PROPERTY DETAILS



Ask for James Gray Haenn  
Berger Realty Inc  
3160 Asbury Avenue, Ocean City  
Call: 609-399-0076  
Email to: jgh@bergerrealty.com

