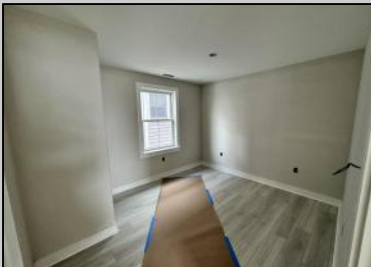


# Berger Realty

Since 1928



Berger Realty, Inc.  
3160 Asbury Avenue  
Ocean City, NJ 08226  
1-877-237-4371 / 609-399-0076  
info@bergerrealty.com



4420 Park  
Sea Isle City, NJ 08243

Asking \$3,799,999.00



## COMMENTS

Coming soon!! Bayfront! Now is your opportunity to own a brand-new duplex on Park Road in Sea Isle City. With 2 units, each containing 4 beds and 3.5 baths, this home is perfect for the whole family. Built by Sea Isle's own Michael O'Neill, you won't want to miss this one! The property includes an elevator, private decks on all 3 floors, attached 2-car garage, new bulkhead and a boat slip. The location is steps to the bay and within walking distance to local restaurants, shops, the promenade and beaches

## PROPERTY DETAILS

|                 |               |                |             |
|-----------------|---------------|----------------|-------------|
| OutsideFeatures | ParkingGarage | OtherRooms     | Heating     |
| Deck            | Garage        | Living Room    | Gas Natural |
| Dock/Boat Slip  | 2 Car         | Dining Room    | Forced Air  |
| Bulkhead        | Attached      | Eat In Kitchen |             |
| Sidewalks       |               | Pantry         |             |
| Waterview       |               |                |             |
| Cooling         | HotWater      | Water          | Sewer       |
| Central Air     | Gas           | City           | City        |
| Ceiling Fan     |               |                |             |
| Multi Zoned     |               |                |             |



Ask for Leon Grisbaum  
Berger Realty Inc  
3160 Asbury Avenue, Ocean City  
Call: 609-399-0076  
Email to:

