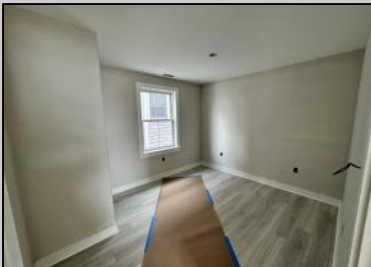


# Berger Realty

Since 1928



Berger Realty, Inc.  
3160 Asbury Avenue  
Ocean City, NJ 08226  
1-877-237-4371 / 609-399-0076  
info@bergerrealty.com



4420 Park  
Sea Isle City, NJ 08243

Asking \$3,799,999.00



## COMMENTS

Coming soon!! Bayfront! Now is your opportunity to own a brand-new duplex on Park Road in Sea Isle City. With 2 units, each containing 4 beds and 3.5 baths, this home is perfect for the whole family. Built by Sea Isle's own Michael O'Neill, you won't want to miss this one! The property includes an elevator, private decks on all 3 floors, attached 2-car garage, new bulkhead and a boat slip. The location is steps to the bay and within walking distance to local restaurants, shops, the promenade and beaches

## PROPERTY DETAILS

OutsideFeatures	ParkingGarage	OtherRooms	Heating
Deck	Garage	Living Room	Gas Natural
Dock/Boat Slip	2 Car	Dining Room	Forced Air
Bulkhead	Attached	Eat In Kitchen	
Sidewalks		Pantry	
Waterview			
Cooling	HotWater	Water	Sewer
Central Air	Gas	City	City
Ceiling Fan			
Multi Zoned			



Ask for Denise Kelley  
Berger Realty Inc  
3160 Asbury Avenue, Ocean City  
Call: 609-399-0076  
Email to: dlk@bergerrealty.com

