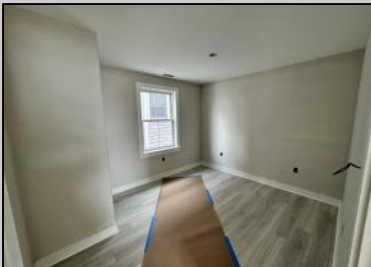


Berger Realty

Since 1928



Berger Realty, Inc
1330 Bay Avenue
Ocean City, NJ 08226
609-391-1330/609-391-1300
info@bergerrealty.com



4420 Park
Sea Isle City, NJ 08243

Asking \$4,200,000.00



COMMENTS

Coming soon!! Bayfront! Now is your opportunity to own a brand-new duplex on Park Road in Sea Isle City. With 2 units, each containing 4 beds and 3.5 baths, this home is perfect for the whole family. Built by Sea Isle's own Michael O'Neill, you won't want to miss this one! The property includes an elevator, private decks on all 3 floors, attached 2-car garage, new bulkhead and a boat slip. The location is steps to the bay and within walking distance to local restaurants, shops, the promenade and beaches

PROPERTY DETAILS

OutsideFeatures	ParkingGarage	OtherRooms	Heating
Deck	Garage	Living Room	Gas Natural
Dock/Boat Slip	2 Car	Dining Room	Forced Air
Bulkhead	Attached	Eat In Kitchen	
Sidewalks		Pantry	
Waterview			
Cooling	HotWater	Water	Sewer
Central Air	Gas	City	City
Ceiling Fan			
Multi Zoned			



Ask for Dave Zelinski
Berger Realty Inc
1330 Bay Avenue, Ocean City
Call: 609-391-1330
Email to: djz@bergerrealty.com

