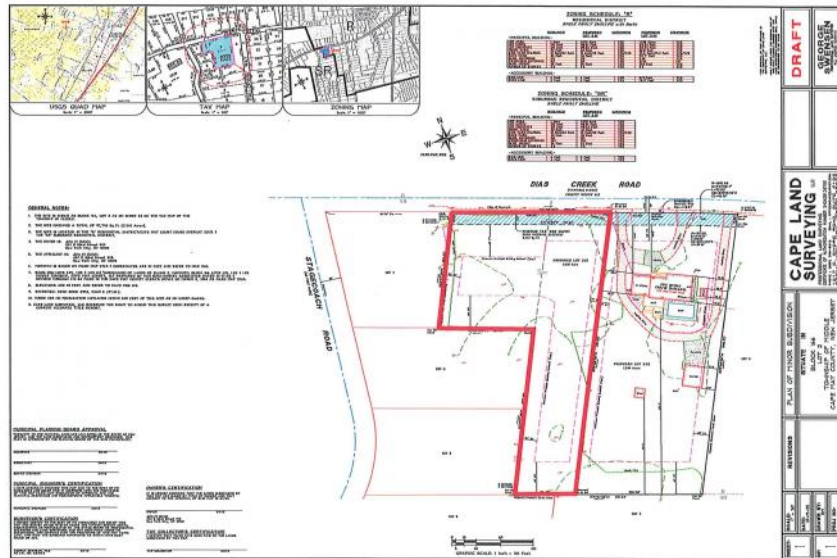




445 Dias Creek
 Cape May Court House, NJ 08210

Asking \$189,000.00



COMMENTS

Newly subdivided one-acre single family lot with 195' frontage on Dias Creek Road. Close to the center of town. Enjoy all that Cape May Court House has to offer. Restaurants, shopping and the bike path that runs all through the county including to the Cape May County Zoo and Park. Great location to custom build the home of your dreams.

PROPERTY DETAILS



Ask for John Van Stone
 Berger Realty Inc
 3160 Asbury Avenue, Ocean City
 Call: 609-399-0076
 Email to: jvs@bergerrealty.com

