

Berger Realty

Since 1928

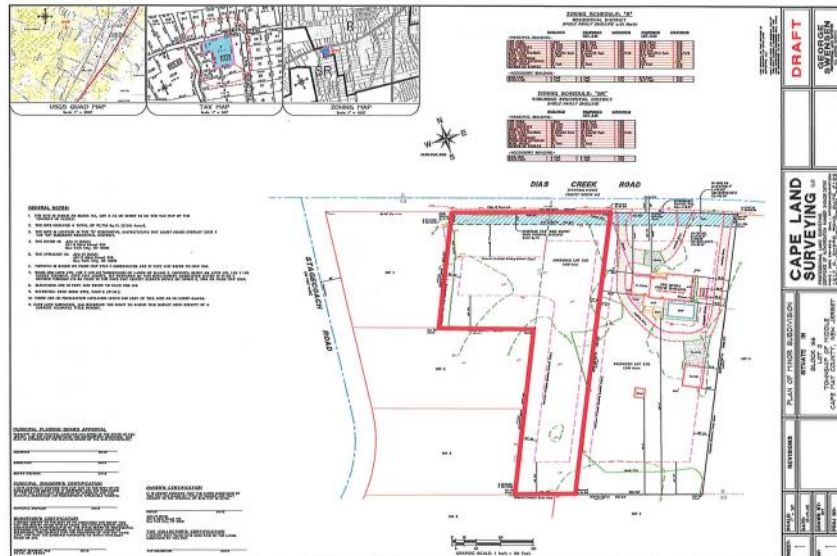


Berger Realty, Inc.
3160 Asbury Avenue
Ocean City, NJ 08226
1-877-237-4371 / 609-399-0076
info@bergerrealty.com



445 Dias Creek
Cape May Court House, NJ 08210

Asking \$189,000.00



COMMENTS

Newly subdivided one-acre single family lot with 195' frontage on Dias Creek Road. Close to the center of town. Enjoy all that Cape May Court House has to offer. Restaurants, shopping and the bike path that runs all through the county including to the Cape May County Zoo and Park. Great location to custom build the home of your dreams.

PROPERTY DETAILS



Ask for Brandon Howell
Berger Realty Inc
3160 Asbury Avenue, Ocean City
Call: 609-399-0076
Email to: bah@bergerrealty.com

