

Berger Realty

Since 1928

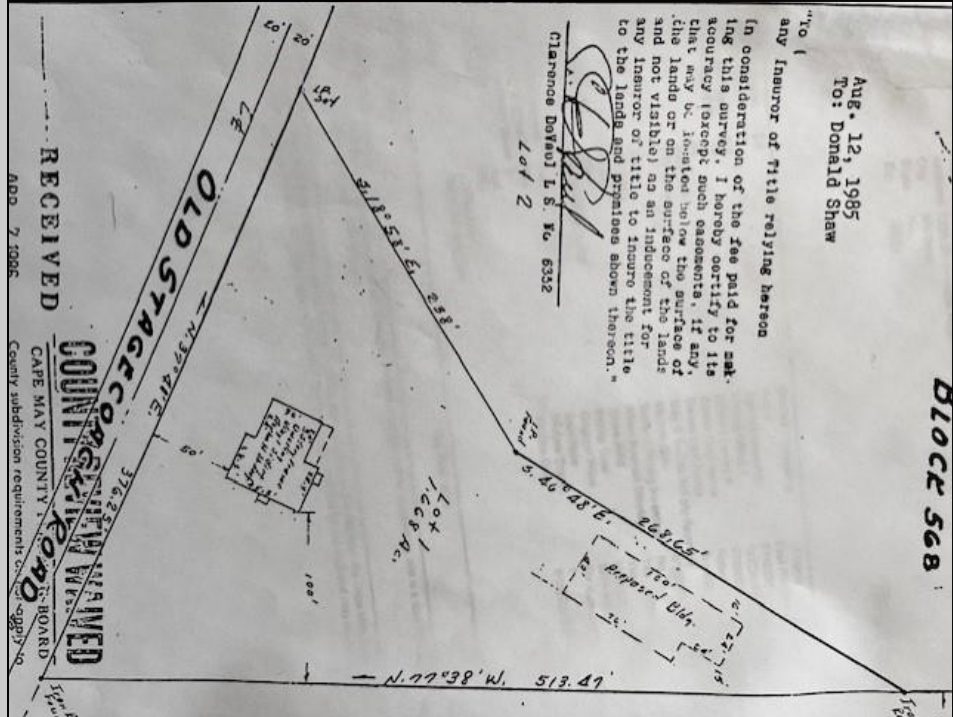


Berger Realty, Inc.
3160 Asbury Avenue
Ocean City, NJ 08226
1-877-237-4371 / 609-399-0076
info@bergerrealty.com



1299 Stagecoach
Palermo, NJ 08223

Asking \$299,000.00



COMMENTS

Commercial lot in a great location in Upper Township. Property has a foundation which might be useable. Second old foundation on the property that had never been used.

PROPERTY DETAILS

Ask for David Collins
Berger Realty Inc
3160 Asbury Avenue, Ocean City
Call: 609-399-0076
Email to: dac@bergerrealty.com

