

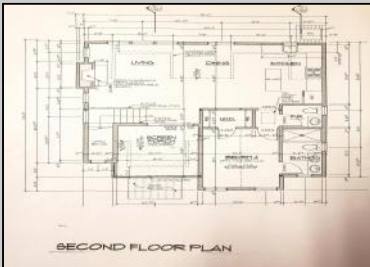


**507 B Lighthouse
 Cape May Point, NJ 08212**

Asking \$2,149,900.00



FIRST FLOOR PLAN



SECOND FLOOR PLAN



LEFT ARCHITECT VIEW

LEFT NEAR VIEW



LEFT ELEVATION



REAR ELEVATION



1C FRONT ELEVATION
 SCALE 1/4" = 1'-0"

NOTE
 - ANDERSEN 200 SERIES WINDOWS
 TYPICAL 244 CH

COMMENTS

Impressive family home with space for everyone! New construction with Hardie Board Siding. This fabulous new 4 Bedrooms, 3.5 Baths upside down home built for comfortable living. On the first floor is a master en suite bedroom as well as 2 guest bedrooms, full hall bath, along with a laundry utility room. Second floor features a large open great room with natural gas fireplace, dining area, kitchen complete with top-of-the-line SS appliances, beverage refrigerator under island. Conveniently located powder room, master bedroom with cathedral ceilings, private bath and walk in closet. Inviting screened in porch with cathedral ceiling perfect for summertime dining. Brick patio in rear with a pathway to the shed. Outside shower for those sandy beach days.

PROPERTY DETAILS

Exterior	Outside Features	Parking Garage	Other Rooms
Hardie Board	Patio	See Remarks	Living Room
	Screened Porch		Dining Room
	Outside Shower		Kitchen
			Laundry/Utility Room
Interior Features	Appliances Included	Basement	Heating
Cathedral Ceilings	Range	Crawl Space	Gas Natural
Fireplace - Gas	Oven		Forced Air
	Microwave Oven		
	Refrigerator		
	Washer		
	Dryer		
	Dishwasher		
	Disposal		
	Smart Home		
	Hot Water	Water	
	Gas - Natural	City	



Ask for Tanya Pinkerton
 Berger Realty Inc
 3160 Asbury Avenue, Ocean City
 Call 609-399-0076
 Email to info@bergerrealty.com

