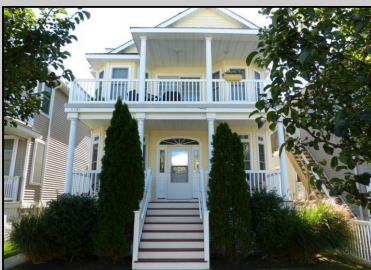




3337 Asbury Avenue 1st, Ocean City



PROPERTY DETAILS

BEDROOMS	3	BATHS	2.0
OCCUPANCY	8	VRDP \$	
PHONE DEP\$	0	WEEKLY \$	N/A
CODE	657e	TYPE	Condo

PROPERTY AMENITIES

TELEVISION	4	FUTON [S D Q]	No
WASHER	Yes	BUNKS	No
DRYER	Yes	PORCH/DECK FURN	Yes
DISHWASHER	Yes	ROOF TOP DECK	No
MICROWAVE	Yes	OUTSIDE SHOWER	Enclosed
AIR CONDITIONER	Central	STORAGE ROOM	Yes
PETS PERMITTED	No	GARAGE/CARPORT	Garage
ELEVATOR	No	GRILL	No
COFFEE MKR.	Keurig+Pot	OFFSTREET PARKING	Yes
EXCLUSIVE		PHONE [B]	No
TWINS	2	INTERNET ACCESS	Wireless
DOUBLE BEDS	0	DVD	Yes
QUEEN BEDS	2	POOL	No
KING BEDS	0	DOCK/BOAT SLIP	No
SOFA BED (TYPE)	d	CEILING FANS	4



WEEKLY RENTALS for 3337 Asbury Avenue (657e), 1st, Ocean City

WEEK	DATE BEGIN	AMOUNT
1	January 03, 2015	N/A
2	January 10, 2015	N/A
3	January 17, 2015	N/A
4	January 24, 2015	N/A
5	January 31, 2015	N/A
6	February 07, 2015	N/A
7	February 14, 2015	N/A
8	February 21, 2015	N/A
9	February 28, 2015	N/A
10	March 07, 2015	N/A
11	March 14, 2015	N/A
12	March 21, 2015	N/A
13	March 28, 2015	N/A
14	April 04, 2015	N/A
15	April 11, 2015	N/A
16	April 18, 2015	N/A
17	April 25, 2015	N/A
18	May 02, 2015	N/A
19	May 09, 2015	N/A
20	May 16, 2015	N/A
21	May 23, 2015	N/A
22	May 30, 2015	\$1,000.00
23	June 06, 2015	\$1,000.00
24	June 13, 2015	N/A
25	June 20, 2015	\$2,000.00
26	June 27, 2015	2,200.00
27	July 04, 2015	2,200.00
28	July 11, 2015	2,200.00
29	July 18, 2015	2,400.00
30	July 25, 2015	2,400.00
31	August 01, 2015	2,400.00
32	August 08, 2015	2,400.00
33	August 15, 2015	2,400.00
34	August 22, 2015	2,000.00
35	August 29, 2015	1,500.00
36	September 05, 2015	\$1,200.00
37	September 12, 2015	1,000.00
38	September 19, 2015	\$1,000.00
39	September 26, 2015	\$1,000.00
40	October 03, 2015	\$1,000.00
41	October 10, 2015	N/A
42	October 17, 2015	N/A
43	October 24, 2015	N/A
44	October 31, 2015	N/A
45	November 07, 2015	N/A
46	November 14, 2015	N/A
47	November 21, 2015	N/A
48	November 28, 2015	N/A
49	December 05, 2015	N/A
50	December 12, 2015	N/A
51	December 19, 2015	N/A
52	December 26, 2015	N/A