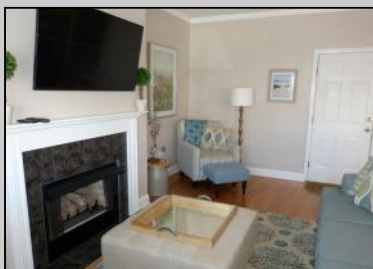




2136 Asbury Avenue 1st Floor, Ocean City



PROPERTY DETAILS

BEDROOMS	3	BATHS	2.0
OCCUPANCY	8	VRDP \$	
PHONE DEP\$	0	WEEKLY \$	N/A
CODE	1080a	TYPE	Condo

PROPERTY AMENITIES

TELEVISION	4	FUTON [S D Q]	0
WASHER	Yes	BUNKS	0
DRYER	Yes	PORCH/DECK FURN	Yes
DISHWASHER	1	ROOF TOP DECK	0
MICROWAVE	1	OUTSIDE SHOWER	Enclosed
AIR CONDITIONER	Central	STORAGE ROOM	No
PETS PERMITTED	No	GARAGE/CARPORT	Carport
ELEVATOR	No	GRILL	No
COFFEE MKR.	Pot	OFFSTREET PARKING	2
EXCLUSIVE		PHONE [B]	2
TWINS	2	INTERNET ACCESS	Wireless
DOUBLE BEDS	0	DVD	Yes
QUEEN BEDS	1	POOL	0
KING BEDS	1	DOCK/BOAT SLIP	0
SOFA BED (TYPE)	0	CEILING FANS	4



WEEKLY RENTALS for 2136 Asbury Avenue (1080a), 1st Floor, Ocean City

WEEK	DATE BEGIN	AMOUNT
1	January 05, 2019	N/A
2	January 12, 2019	N/A
3	January 19, 2019	N/A
4	January 26, 2019	N/A
5	February 02, 2019	N/A
6	February 09, 2019	N/A
7	February 16, 2019	N/A
8	February 23, 2019	N/A
9	March 02, 2019	N/A
10	March 09, 2019	N/A
11	March 16, 2019	N/A
12	March 23, 2019	N/A
13	March 30, 2019	N/A
14	April 06, 2019	N/A
15	April 13, 2019	N/A
16	April 20, 2019	N/A
17	April 27, 2019	N/A
18	May 04, 2019	N/A
19	May 11, 2019	1,000.00
20	May 18, 2019	\$1,000.00
21	May 25, 2019	1,000.00
22	June 01, 2019	1,200.00
23	June 08, 2019	1,400.00
24	June 15, 2019	1,800.00
25	June 22, 2019	2,200.00
26	June 29, 2019	2,600.00
27	July 06, 2019	2,750.00
28	July 13, 2019	2,800.00
29	July 20, 2019	2,800.00
30	July 27, 2019	2,800.00
31	August 03, 2019	2,800.00
32	August 10, 2019	2,750.00
33	August 17, 2019	2,500.00
34	August 24, 2019	2,100.00
35	August 31, 2019	1,700.00
36	September 07, 2019	1,300.00
37	September 14, 2019	\$1,300.00
38	September 21, 2019	1,100.00
39	September 28, 2019	1,000.00
40	October 05, 2019	N/A
41	October 12, 2019	N/A
42	October 19, 2019	N/A
43	October 26, 2019	N/A
44	November 02, 2019	N/A
45	November 09, 2019	N/A
46	November 16, 2019	N/A
47	November 23, 2019	N/A
48	November 30, 2019	N/A
49	December 07, 2019	N/A
50	December 14, 2019	N/A
51	December 21, 2019	N/A
52	December 28, 2019	N/A